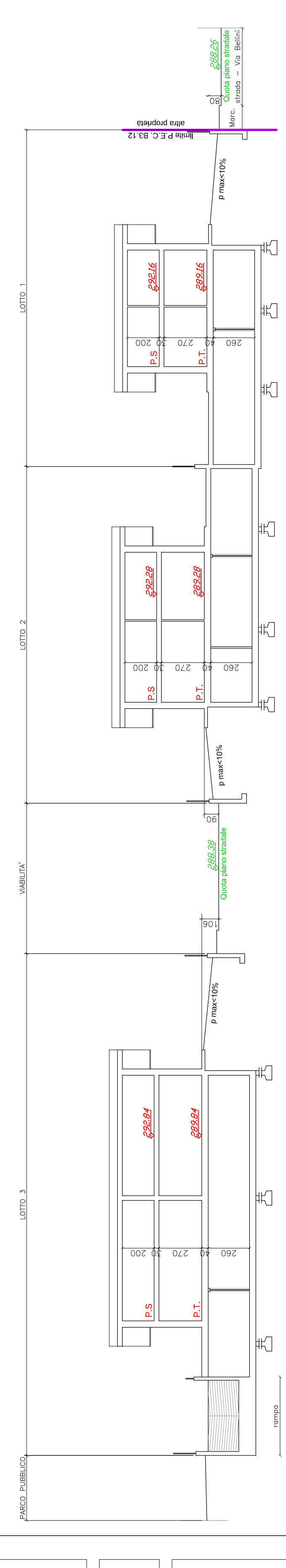
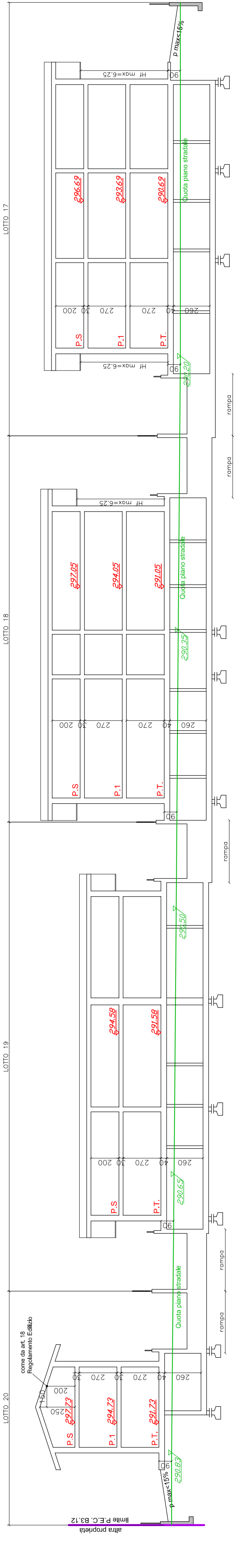


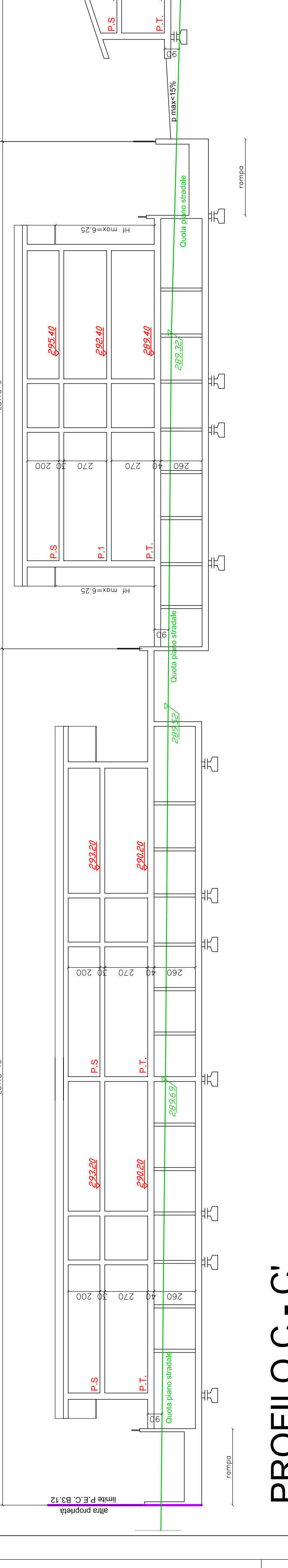
PROFILO A - A'
scala 1:200



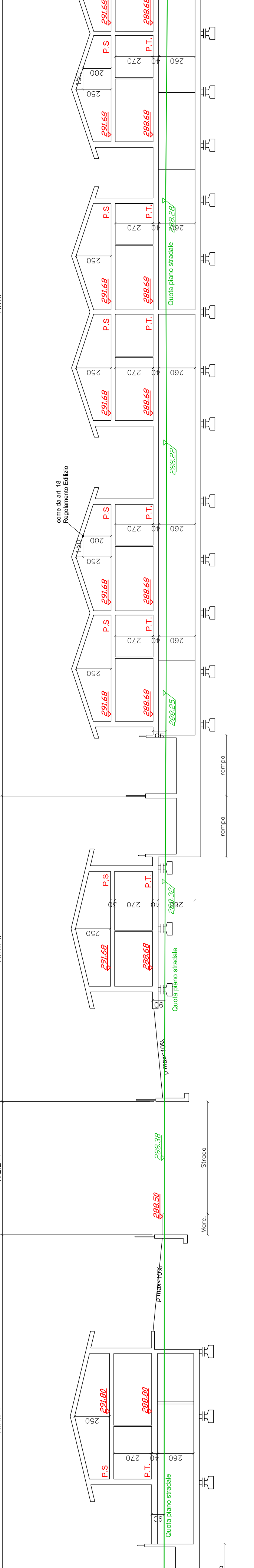
PROFILO D - D'
scala 1:200



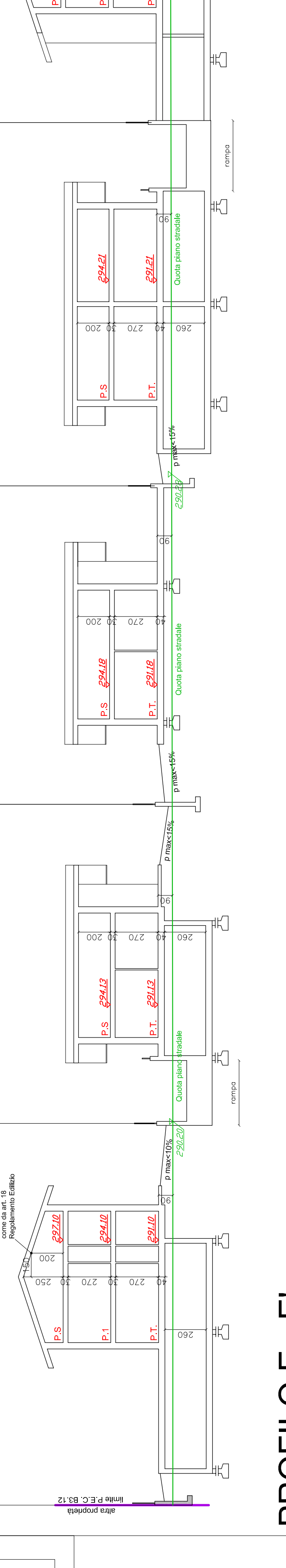
PROFILO B - B'
scala 1:200



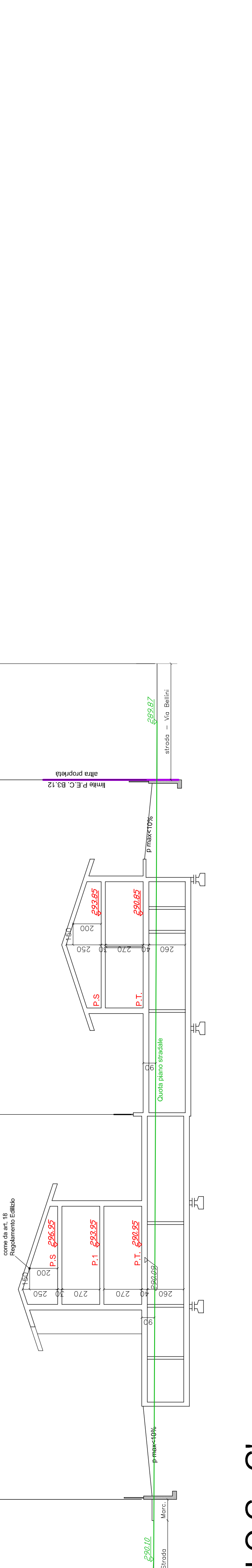
PROFILO C - C'
scala 1:200



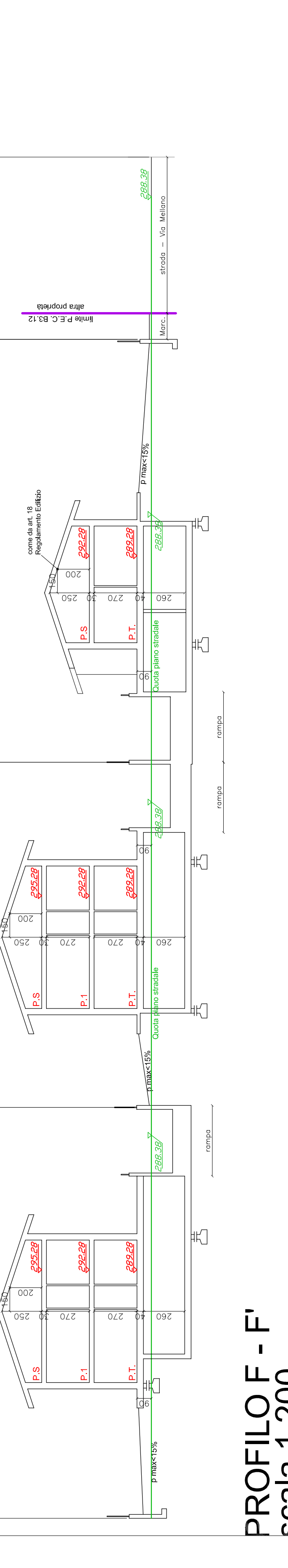
PROFILO E - E'
scala 1:200



PROFILO G - G'
scala 1:200



PROFILO F - F'
scala 1:200



INGEGNERE Giuseppe VADALA	INGEGNERE Flavio CASTEGNARO
Via Sissa n° 9 bis - Turin	
COMUNE DI RIVALTA	
STRUMENTO URBANISTICO ESECUTIVO	
ZONA B3.12 - B3.12	
PROFILI	
PROPRIETARI PARTICIPANTI AL P.E.C.	PRIMA PROGETTISTI
GREEN LIFE s.r.l.	Ing. Giuseppe VADALA
CAPPATO Ludovico & C. SNC	Ing. Flavio Castegnaro
ZANCHETTA Paolo	
SEGARELLI Fabio	
IMMOBILIARE RIVALTA SNC	
VADALA Diego	
BELLANTONI Giovanna	DATA: Settembre 2018
CALVETTO Enrico	SCALA: Varie
SERRAVALLE Pasquale	TAV. N°
SERRAVALLE Maddalena	5